

CONSULT-III Software Installation Instructions (after V08.10.01)

The installation procedure of CONSULT-III software is changed after V08.10.01.

When updating the software from the previous version (before V08.09.01), please perform the installation as the following procedure.


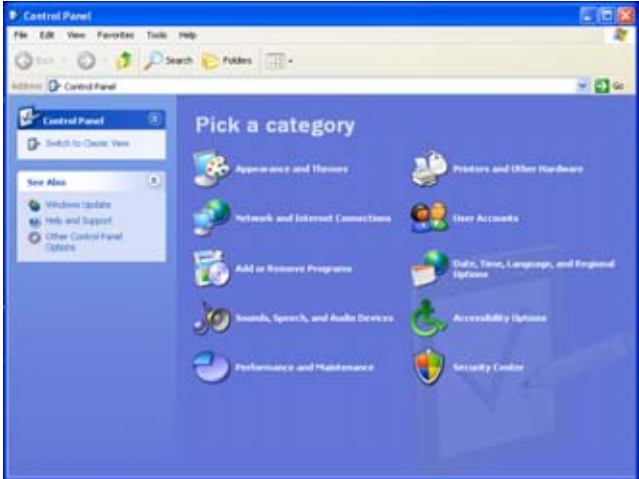
* Before installing this version, it is necessary to uninstall the previous CONSULT-III.

New procedures are the following 2 steps.

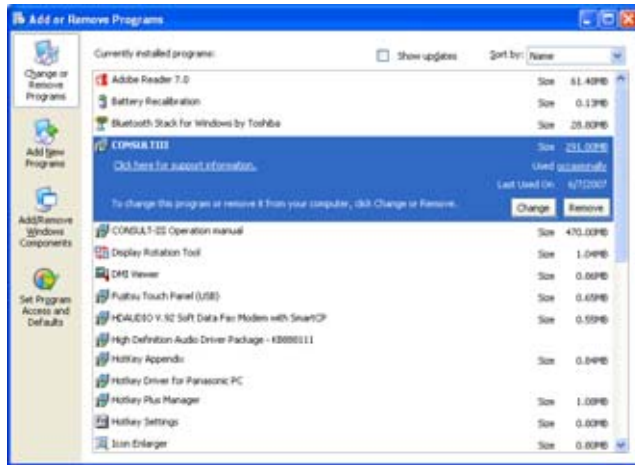
1. Uninstallation of the previous version of CONSULT-III software

2. Installation of a new version of CONSULT-III software (First install).

1. Uninstallation of the previous version of CONSULT-III software

<p>1.1.</p>  <p>The screenshot shows the Windows XP Start menu for an Administrator user. The menu is open, displaying a list of applications and system tools. The 'Control Panel' icon is visible in the right-hand column of the menu. At the bottom of the menu, there are buttons for 'Log Off' and 'Turn Off Computer'.</p>	<p>* Before starting the procedure, always connect the AC adapter to the PC.</p> <p>1.1.1. Connect the AC adapter to the PC.</p> <p>1.1.2. Touch "start".</p> <p>1.1.3. Touch "Control Panel".</p>
<p>1.2.</p>  <p>The screenshot shows the Windows XP Control Panel window. The window title is 'Control Panel'. The main area is titled 'Pick a category' and contains several icons representing different system settings categories, including 'Appearance and Themes', 'Network and Internet Connections', 'Add or Remove Programs', 'Performance and Maintenance', 'Printers and Other Hardware', 'User Accounts', 'Date, Time, Language, and Regional Options', 'Accessibility Options', and 'Security Center'. The 'Add or Remove Programs' icon is highlighted.</p>	<p>1.2.1. Touch "Add or Remove Programs".</p>

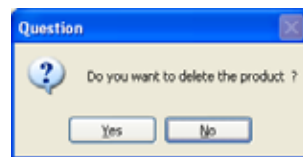
1.3



1.3.1. Touch "CONSULTIII".

1.3.2. Touch "Remove".

1.4.



1.4.1. Touch "Yes".

2. Installation of a new version of CONSULT-III software (First install).

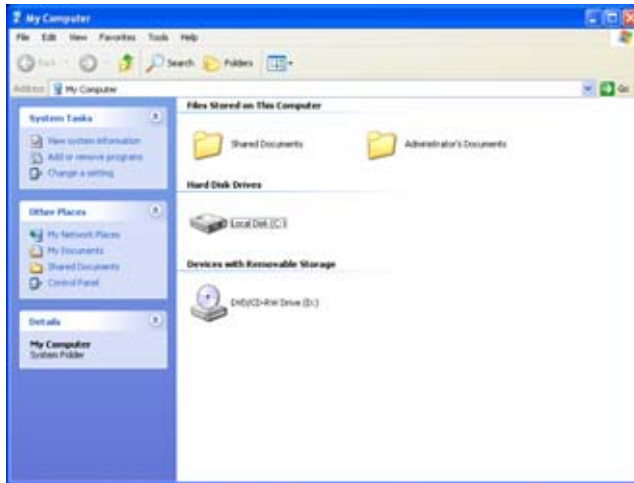
2.1.



2.1.1. Touch "start".

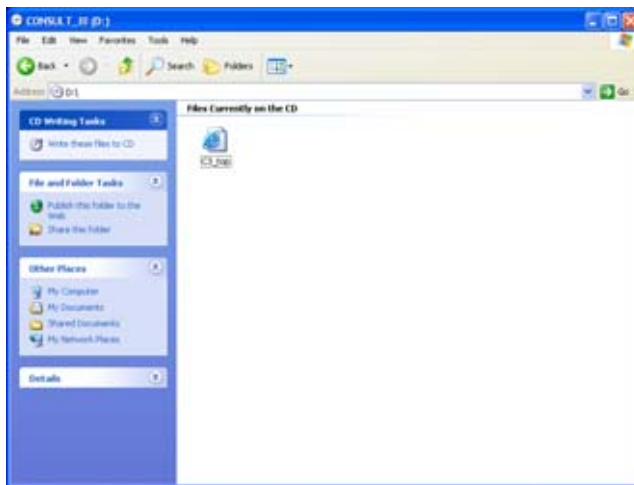
2.1.2. Touch "My Computer".

2.2.



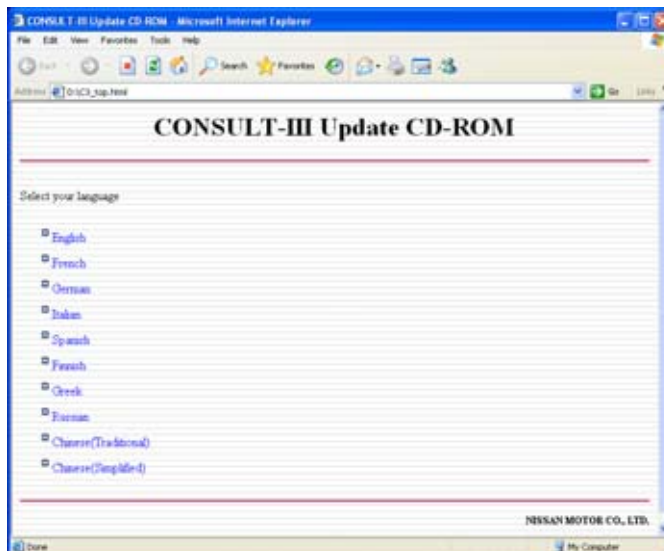
2.2.1. Double-touch the CD icon labeled "CONSULT_III".

2.3.



2.3.1. Double-touch "C3_top".

2.4.



2.4.1. Touch your language.

2.5.



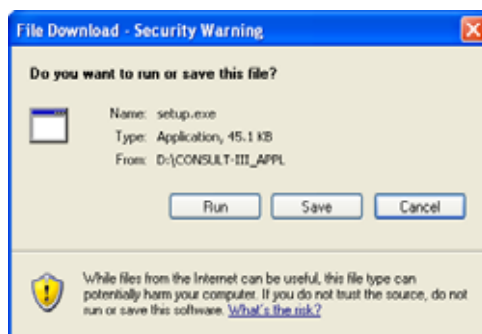
2.5.1. Touch "CONSULT-III Software Installation".

2.6.



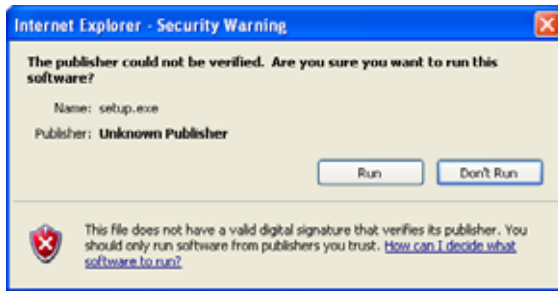
2.6.1. Touch "CONSULT-III Software Installation".

2.7.



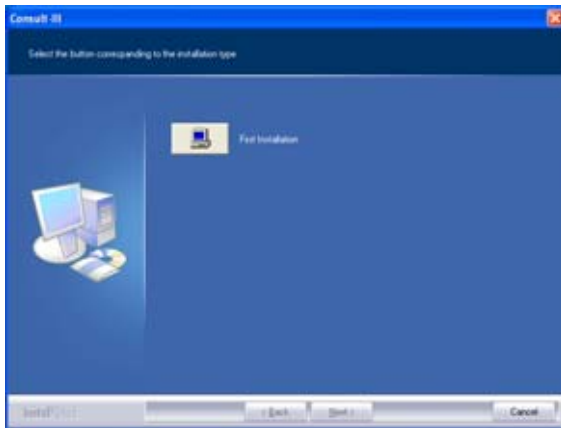
2.7.1. Touch "Run".

2.8.



2.8.1. Touch "Run".

2.9.



2.9.1. Touch "First Installation".

2.10



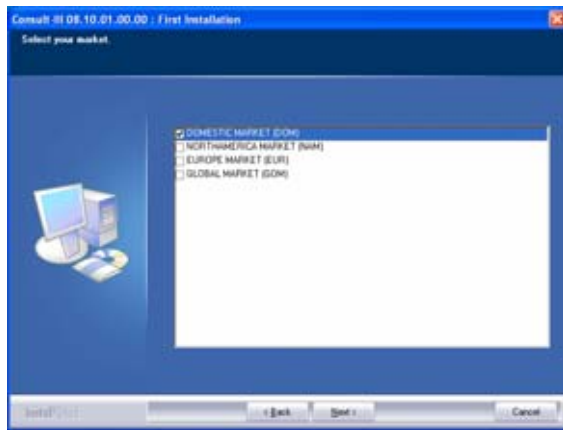
2.10.1 Touch "I accept the terms of the license agreement".

2.11



2.11.1. Touch "Next".

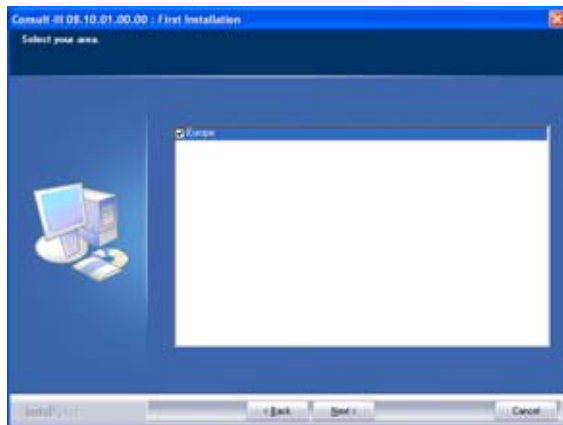
2.12.



2.12.1. Touch Your market.

2.12.2. Touch "Next".

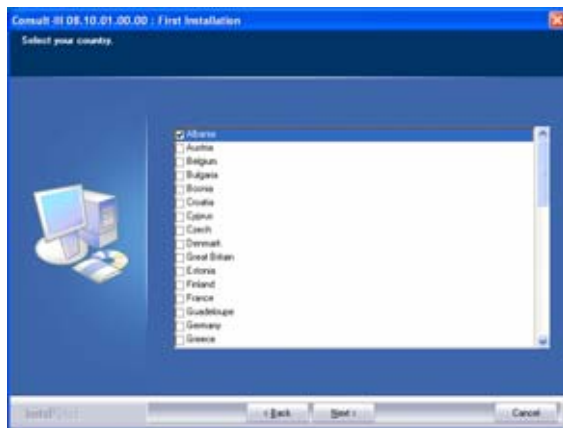
2.13.



2.13.1. Touch Your area.

2.13.2. Touch "Next".

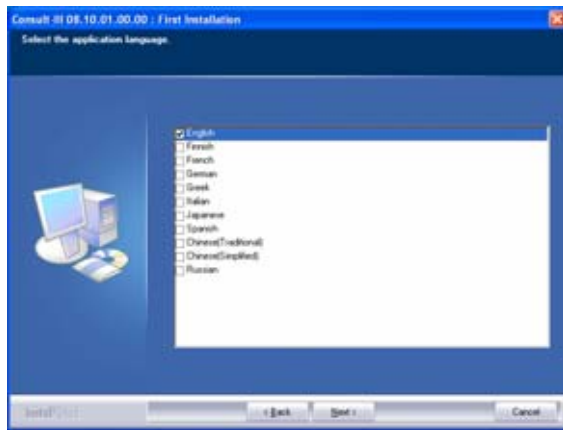
2.14.



2.14.1. Touch Your country.

2.14.2. Touch "Next".

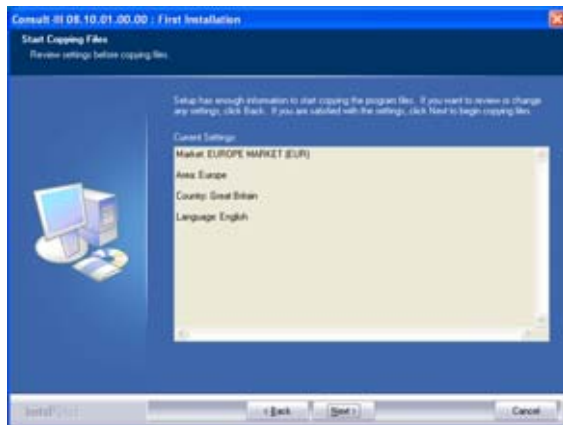
2.15.



2.15.1. Touch the application language.

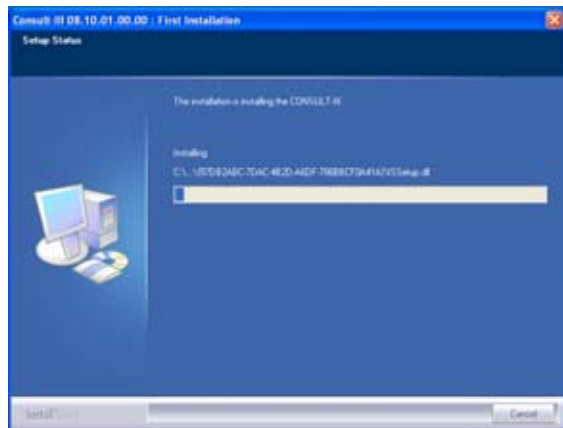
2.15.2. Touch "Next".

2.16.



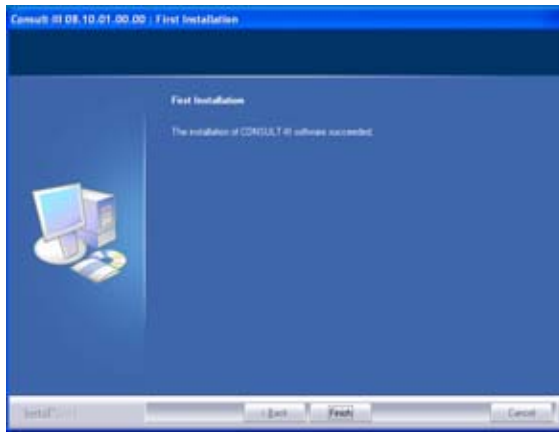
2.16.1. Touch "Next".

2.17.



* The installation is started.

2.18.



2.18.1. Touch "Finish".